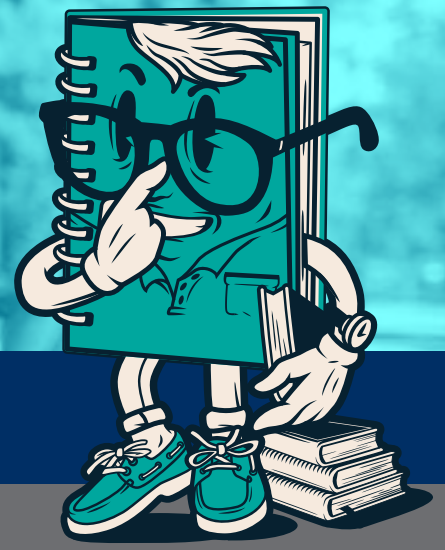


# STUDENT

## NEWS



Your all-in-one IOL e-newsletter. August 2021 | EDITION 01  
Each month IOL include valuable information in the newsletter on current hot topics.



## School Based Studies - SBS

School Based Studies (SBS) is a compulsory subject for all the education qualifications. The student must qualify to do SBS at a school of their choice. Each phase has a specific duration (number of weeks) that the student is required to attend school and do their practical.

### Proceedings:

- Students will receive a SMS notification that they qualify to do SBS.
- Students are required to submit a completed Principal Permission Letter (PPL) which is available on their student portal once they qualify to do SBS.
- The SBS assignment and study guide will be made available to students after submission of the completed PPL.
- Changing of schools is permitted, but a new PPL will have to be submitted before the commencement of the SBS.

### SBS queries

All SBS related queries needs to be send to the following email address:

**SBSIOL@tgh.na**

Always remember to cite your CIF/ student number or ID number when seeking assistance.

For more information on SBS for the rest of 2021, follow the link: [www.iol.na/covid/](http://www.iol.na/covid/)

### SBS staff

Course Coordinator  
Mr. Waldimar E. Swartz  
SBS Assistants  
Ms. Jacqueline De Koe  
Ms. Kalista Muranda



### What happens when SBS is completed:

- After the specific period at the school elapses, students should submit the completed SBS guide and assignment not later than the date stated on the PPL.
- A student must obtain at least 60% per section (Assignment; Preparation; Presentation) to pass SBS. Should the minimum mark of 60% not be obtained, the student will get the opportunity to redo the section(s). If the student fails the redo, (s)he will only be allowed to resubmit the next redo in the following semester. Should a student fail the first redo, (s)he will be required to pay for the second redo.
- The marked study guide will be sent back to the student, once the results for SBS has been released.



### Did you Know:

The SBS Tutor or Regional/Course Coordinator may pay you an evaluation visit at any time during the SBS period. Should you not be at the school, the SBS phase will be cancelled and you will have to re-apply to do the specific phase.

### Contact details

IOL Call Center: 061 270 9100

WhatsApp: 085 715 4864

Email: [IOL@tgh.na](mailto:IOL@tgh.na)

Facebook Institute for Open Learning (@iolnam)

Website: [www.IOL.na](http://www.IOL.na)

Online Shop: [www.IOL.na/shop](http://www.IOL.na/shop)

